
Beta Radioactivity

Experiments on Beta Radioactivity

Lodovico Lappetito

Table of Contents

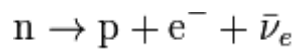
Introduction.....	3
Experimental Setup	4
Deflection in a Magnetic Field.....	6
Beta Radiation Detected with Plastic Scintillator	7
Beta Radiation Detected with CsI(Tl) Scintillator	9

Introduction

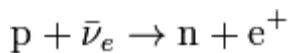


A **beta particle**, sometimes called beta ray, denoted by the lower-case Greek letter beta (β), is a high-energy, high-speed electron or positron emitted in the radioactive decay of an atomic nucleus, such as a potassium-40 nucleus, in the process of beta decay. Two forms of beta decay, β^- and β^+ , respectively produce electrons and positrons. Beta particles are a type of ionizing radiation.

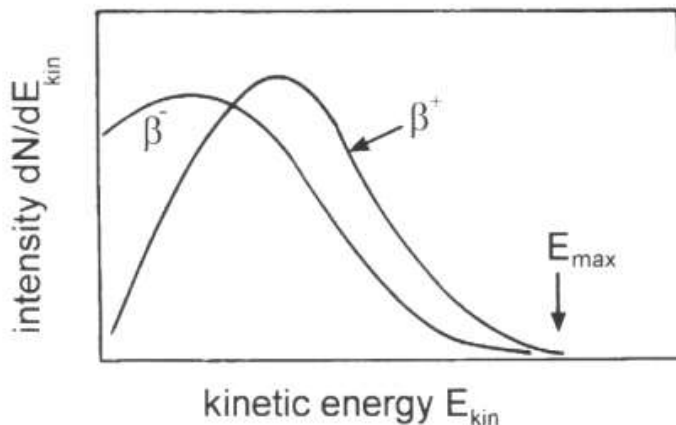
An unstable atomic nucleus with an excess of neutrons may undergo β^- decay, where a neutron is converted into a proton, an electron, and an electron antineutrino (the antiparticle of the neutrino):



Unstable atomic nuclei with an excess of protons may undergo β^+ decay, also called positron decay, where a proton is converted into a neutron, a positron, and an electron neutrino:



Of the three common types of radiation given off by radioactive materials, alpha, beta and gamma, beta has the **medium penetrating power** and the medium ionizing power. Although the beta particles given off by different radioactive materials vary in energy, most beta particles can be stopped by a few millimeters of aluminum. Being composed of charged particles, beta radiation is more strongly ionizing than gamma radiation. When passing through matter, a beta particle is decelerated by electromagnetic interactions and may give off **bremstrahlung x-rays**.



the fact that in beta decay is also emitted, together with the electron or positron, a neutrino, causes to the fact that the electron has a continuous spectrum of energies that range from a minimum to a maximum which happens when the neutrino is given zero energy.

Experimental Setup

For detecting Beta particles the following geiger tube has been used :



Sensor : Geiger tube LND-712

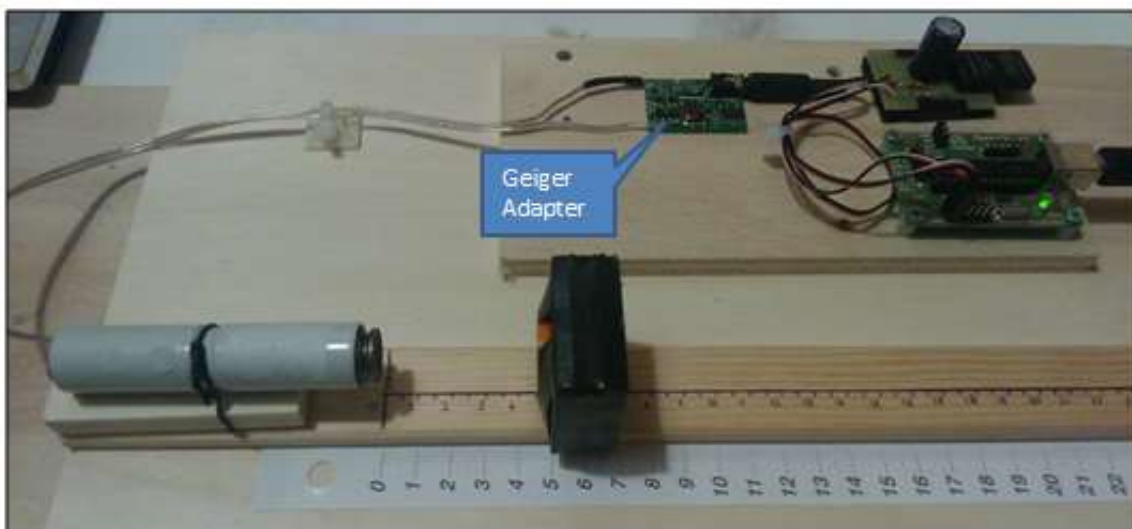
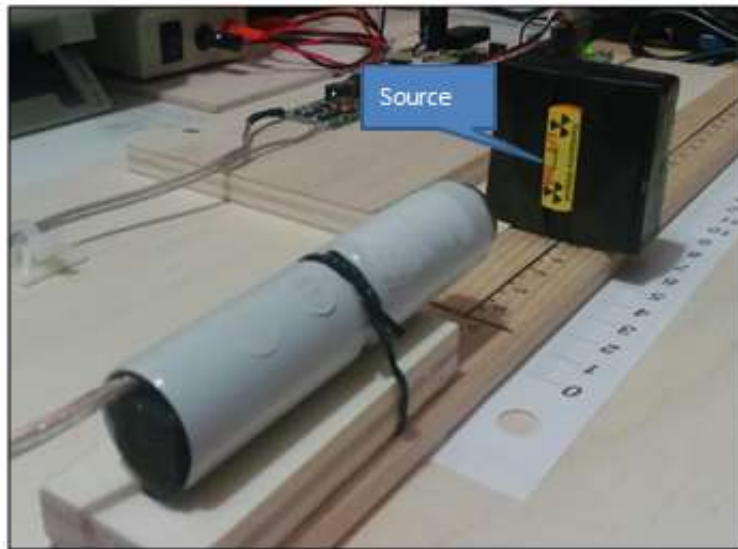
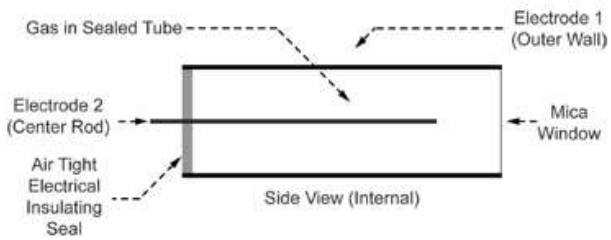
Sensitivity: 18 CPS/mR/h

Bkg: 0.10 CPS

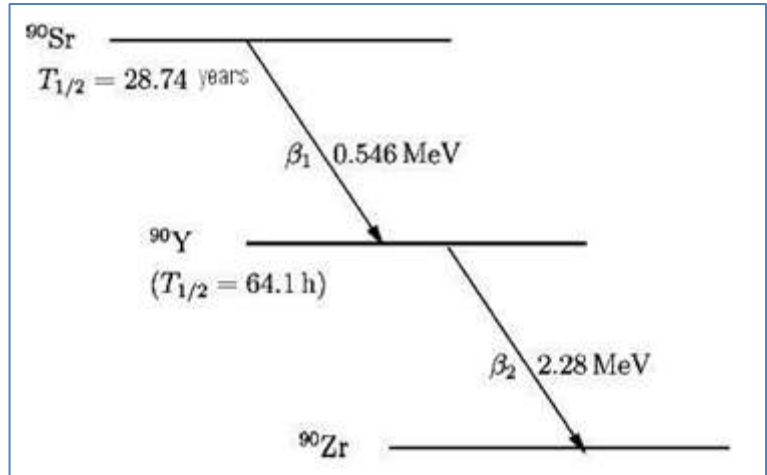
Voltage: 500 volt

Resistance: 5.6Mohm

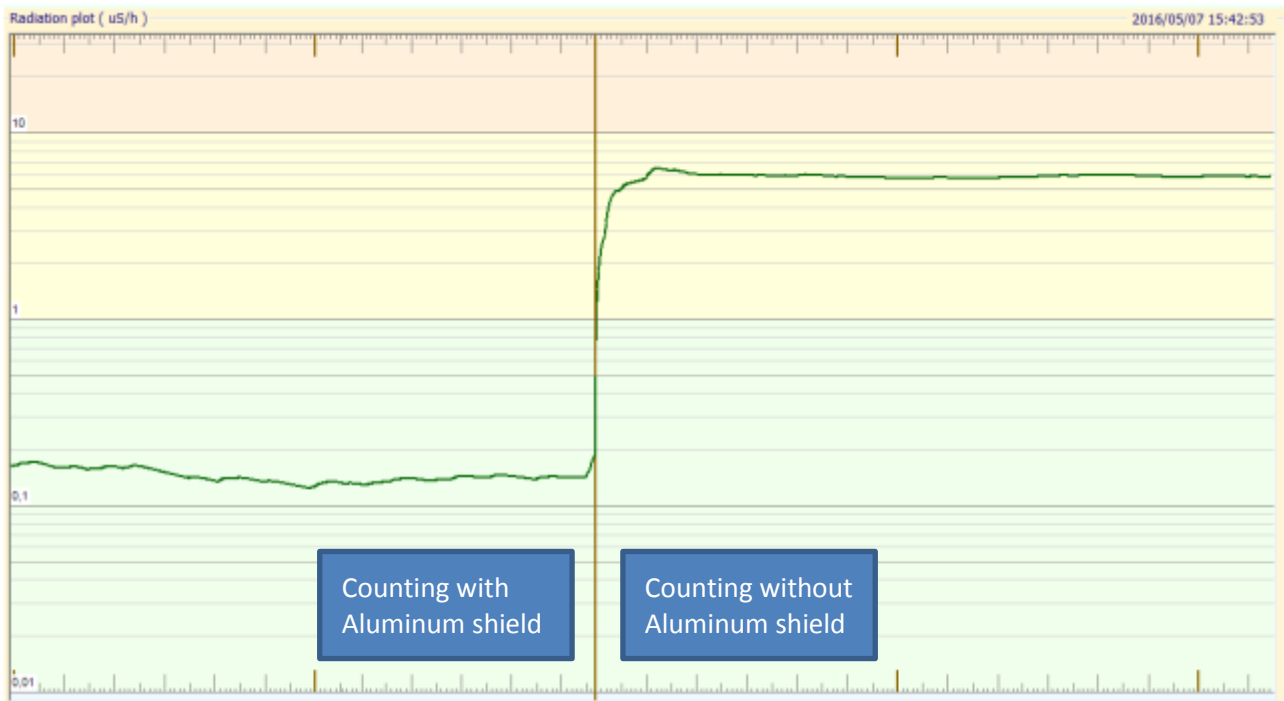
Radiation: Alpha + Beta + Gamma



Using the experimental setup described in the previous paragraph we made the measurement of radioactivity from beta particles emitted by a source of $0,1\mu\text{Ci}$ isotope Strontium 90. As can be seen from the image below the beta decay of **strontium 90** gives rise to the emission of beta particles with maximum energy of **0,546MeV** and **2,28MeV** .

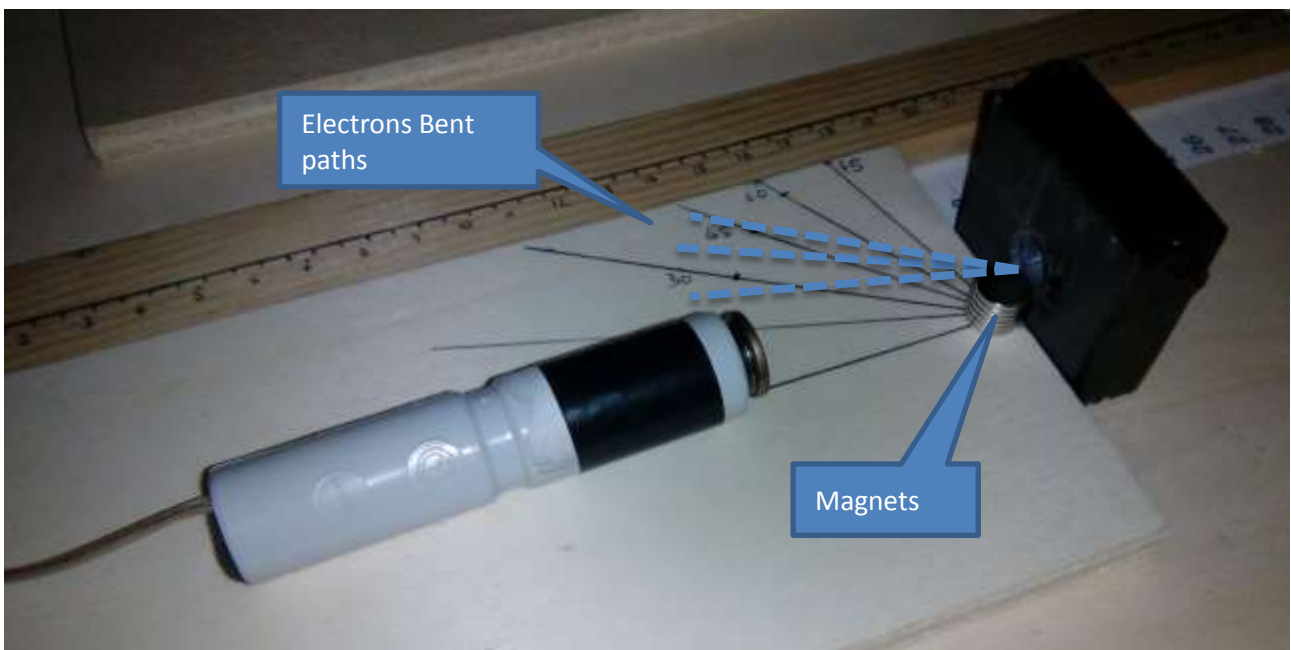
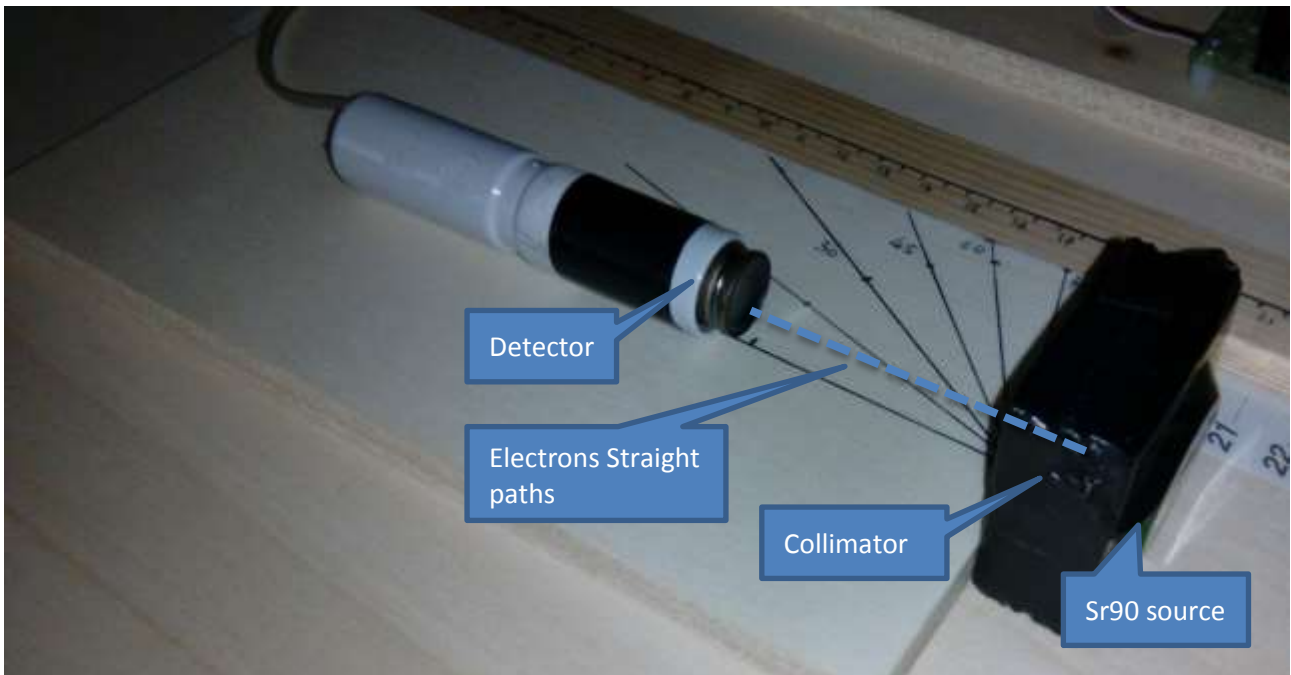


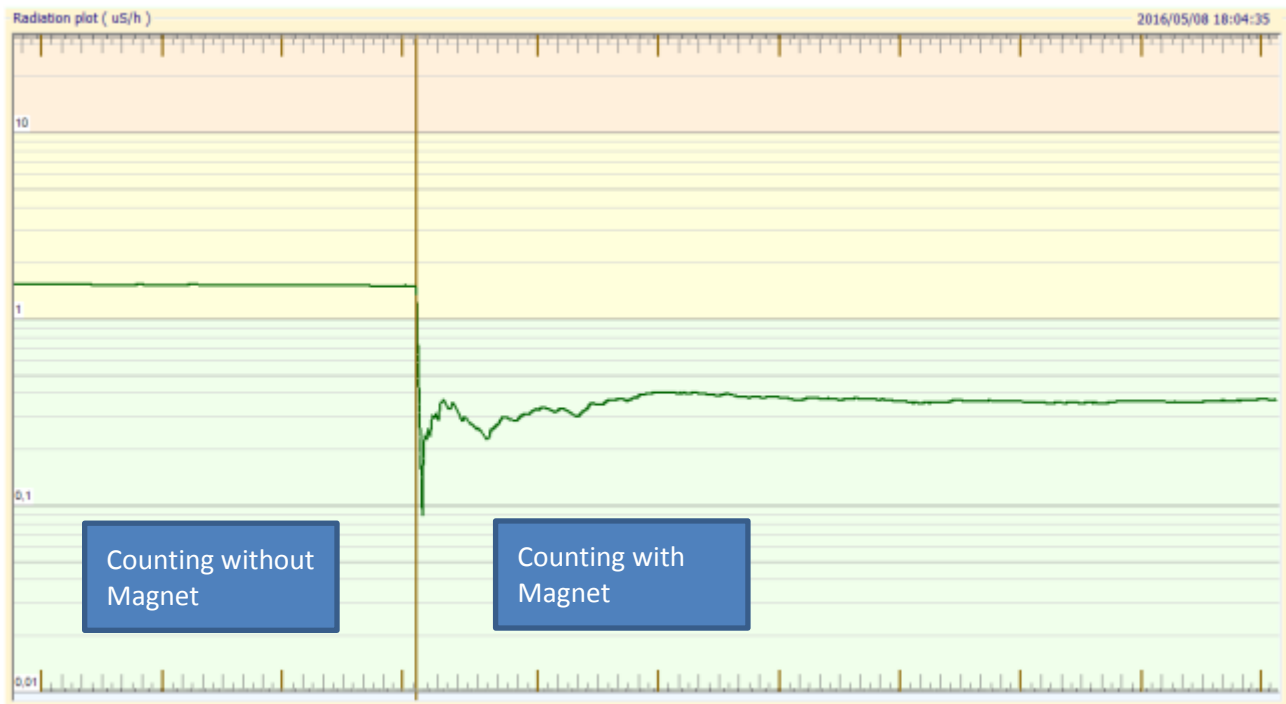
Two measurements were made : the first has been done shielding the sensor with an aluminum shield and the second without the shield, maintaining fixed the distance between the sensor and the source. As you can see by the graph below the effect of the **aluminum screen** it is to **completely block the beta particles** : when the sensor is shielded, it is measured a level equal to the background level .



Deflection in a Magnetic Field

The electrons which constitute the beta emission can be easily deflected by a magnetic field generated by permanent neodymium magnets. In the figures below is presented a simple qualitative experiment demonstrating this phenomenon. The beta emission is collimated with a lead shield, at the exit of the collimator hole a permanent magnet is placed. Placing the magnets as in figure, the sensor count decreases significantly : this is a sign that the electrons are deflected by the magnetic field and no longer reach the sensor.



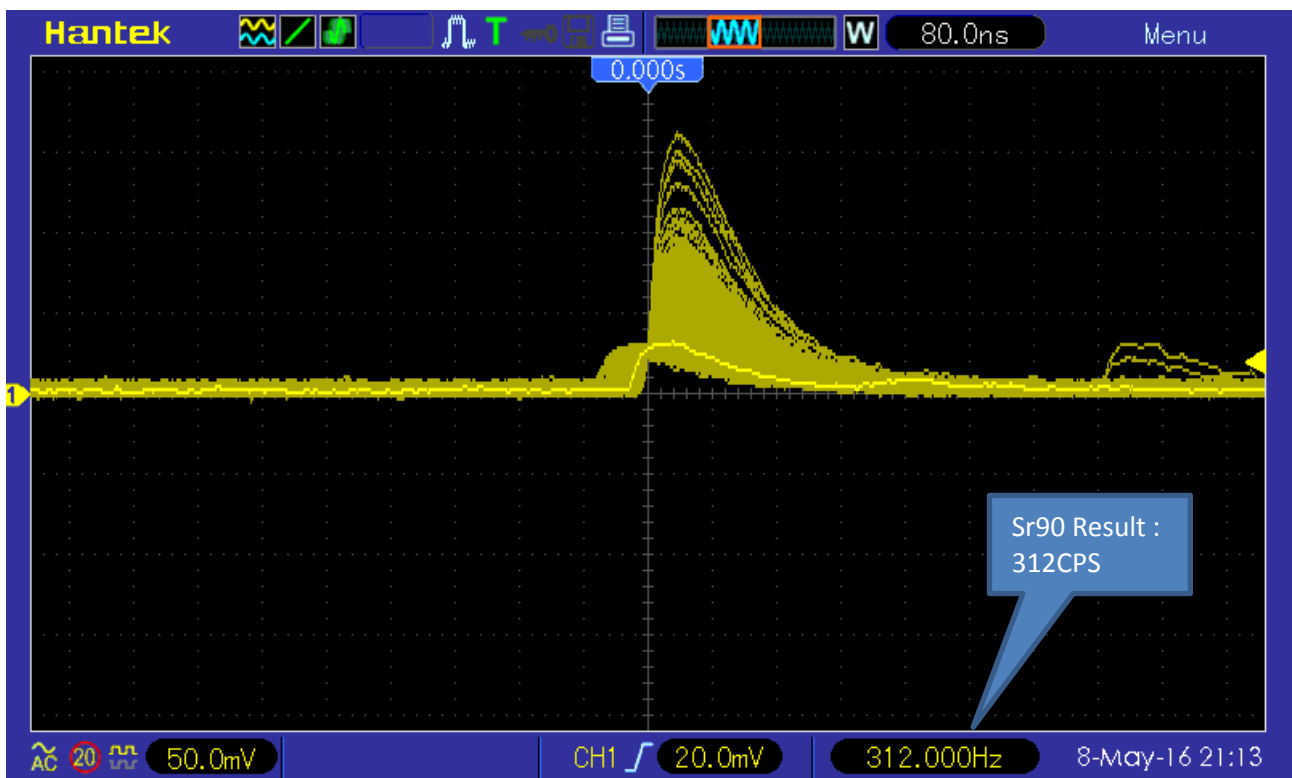
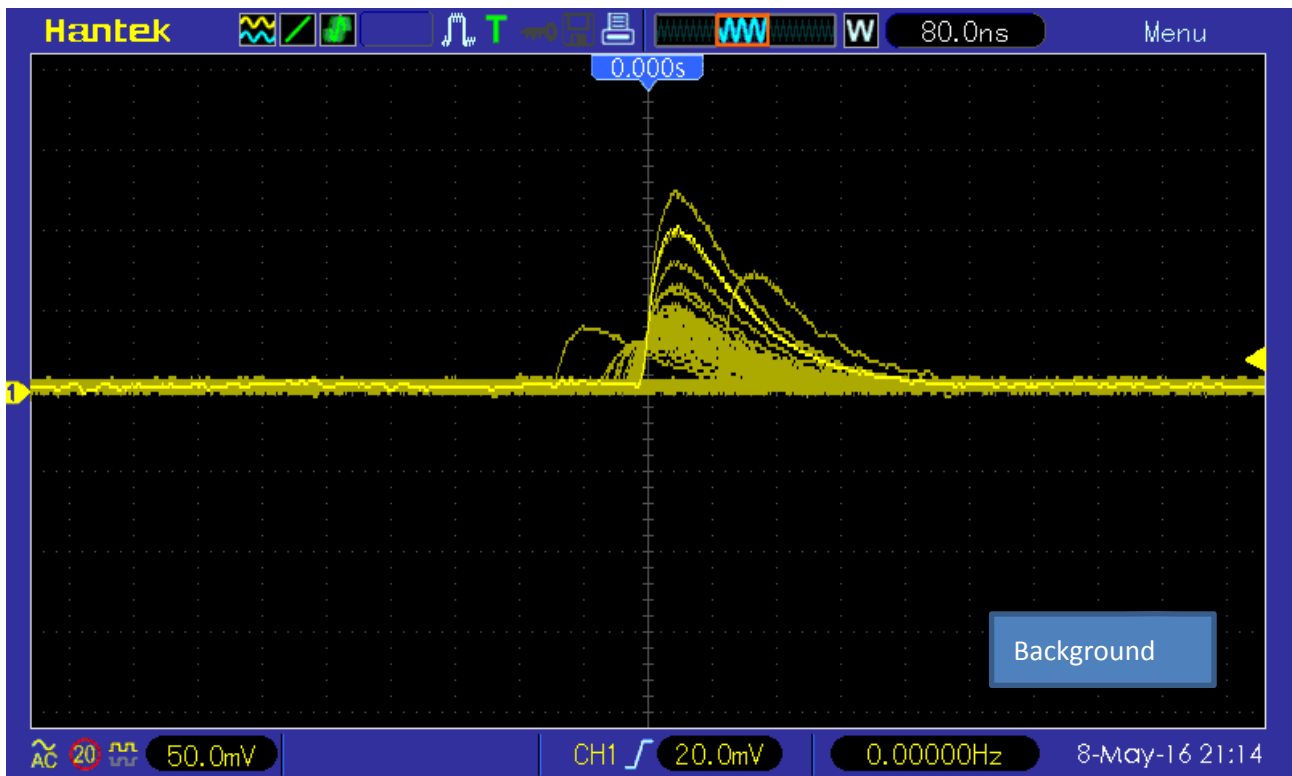


Beta Radiation Detected with Plastic Scintillator

Beta particles can also be detected using scintillation sensors, in particular liquid scintillators and plastic scintillators. In the figure below it is presented the plastic scintillator coupled to a silicon photomultiplier, used for the tests. The beta source, **0,1uCi of Sr90**, is placed on the plastic crystal (suitably shielded from light), near the SiPM sensor.



In the figures below the oscilloscope traces of the SiPM signal are shown. It is evident that, compared to the case without the source on the crystal, the pulses are in a much greater number and a count value equal to about **300CPS** is reached.



Beta Radiation Detected with CsI(Tl) Scintillator

We tried to acquire the energy spectrum of the isotope Sr90 with CsI(Tl) scintillator. The detector is made of a CsI(Tl) crystal with thickness of only 1mm, coupled to a PMT. This detector is designed for XRF applications, having a very thin aluminum input window. In this way, also the beta particles may reach the scintillator crystal. The spectrum obtained is presented in the figure below.

Note the high rate count : **223CPS**. The peaks below 100keV are due to the **XRF excitation of iodine, cesium and thallium** contained within the crystal itself. From 100keV to 800keV it is mainly present the contribution due to **beta radiation**.

